

Hector International Airport

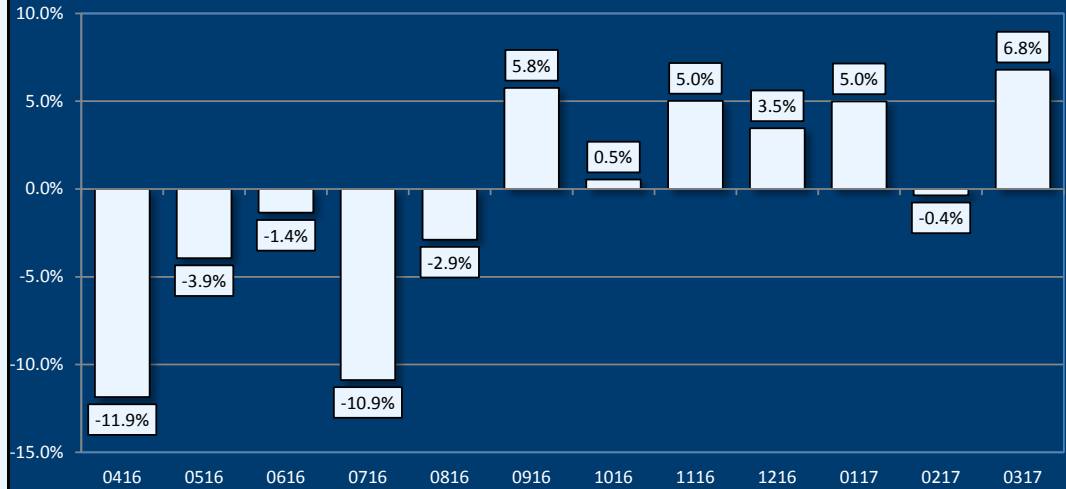
Data Acquired via OAG on October 20, 2016

Volume 03-17

April 2016 thru March 2017 (Scheduled Flights Only)

October 20, 2016

Monthly Scheduled Flights Update



Percent Year Over Year Change in Average Seats at Fargo

Highlights in This Issue



For March 2017, Fargo will average 20 departures and 1,625 seats per day, a 3.8% increase in flights and a 6.8% increase in seats from March 2016. Aircraft will average 81 seats per flight.



For March 2017, the largest destination, in terms of flights at Fargo will be Minneapolis/St. Paul, averaging 6.7 departures per day. The largest destination, in terms of seats at Fargo will be Minneapolis/St. Paul, averaging 635 seats per day.



For March 2017, the largest airline, in terms of flights at Fargo will be Delta Air Lines, averaging 6.8 departures per day. The largest airline, in terms of seats at Fargo will be Delta Air Lines, averaging 645 seats per day.



For March 2017, the most used aircraft, in terms of flights at Fargo will be the CRJ, averaging 5.5 departures per day. The most utilized aircraft, in terms of seats at Fargo will be the M80, averaging 380 seats per day.

report generated for:

Hector International Airport
Post Office Box 2845
Fargo, ND 58108
(701) 241-1501



497 Oakway Road, Suite 280
Eugene, Oregon 97401
(541) 341-1601

Table of Contents

FAR Totals

2	Average Departures Per Day at Fargo
2	Percent Year Over Year Change in Average Departures at Fargo
3	Average Seats Per Day at Fargo
3	Percent Year Over Year Change in Average Seats at Fargo
4	Average First Class Seats Per Day at Fargo
4	Percent Year Over Year Change in Average First Class Seats at Fargo

FAR Totals by Airport

5	Total Departures by Top Destinations at Fargo
5	Total Nonstop Seats by Top Destinations at Fargo
6	Share of Total Departures by Top Destinations at Fargo
6	Share of Total Seats by Top Destinations at Fargo
7	Average Daily Nonstop Departures by Destination at Fargo
7	Average Daily Nonstop Seats by Destination at Fargo

FAR Totals by Airline

8	Total Departures by Top Airlines at Fargo
8	Total Seats by Top Airlines at Fargo
9	Share of Total Departures by Top Airlines at Fargo
9	Share of Total Seats by Top Airlines at Fargo
10	Average Daily Nonstop Departures by Airline at Fargo
10	Average Daily Nonstop Seats by Airline at Fargo

FAR Totals by Equipment Type

11	Total Departures by Top Equipment Type Used at Fargo
11	Total Seats by Top Equipment Type Used at Fargo
12	Share of Total Departures by Equipment Type Used at Fargo
12	Share of Total Seats by Equipment Type Used at Fargo
13	Average Daily Nonstop Departures by Equipment Type at Fargo
13	Average Daily Nonstop Seats by Equipment Type at Fargo

FAR Totals by Equipment

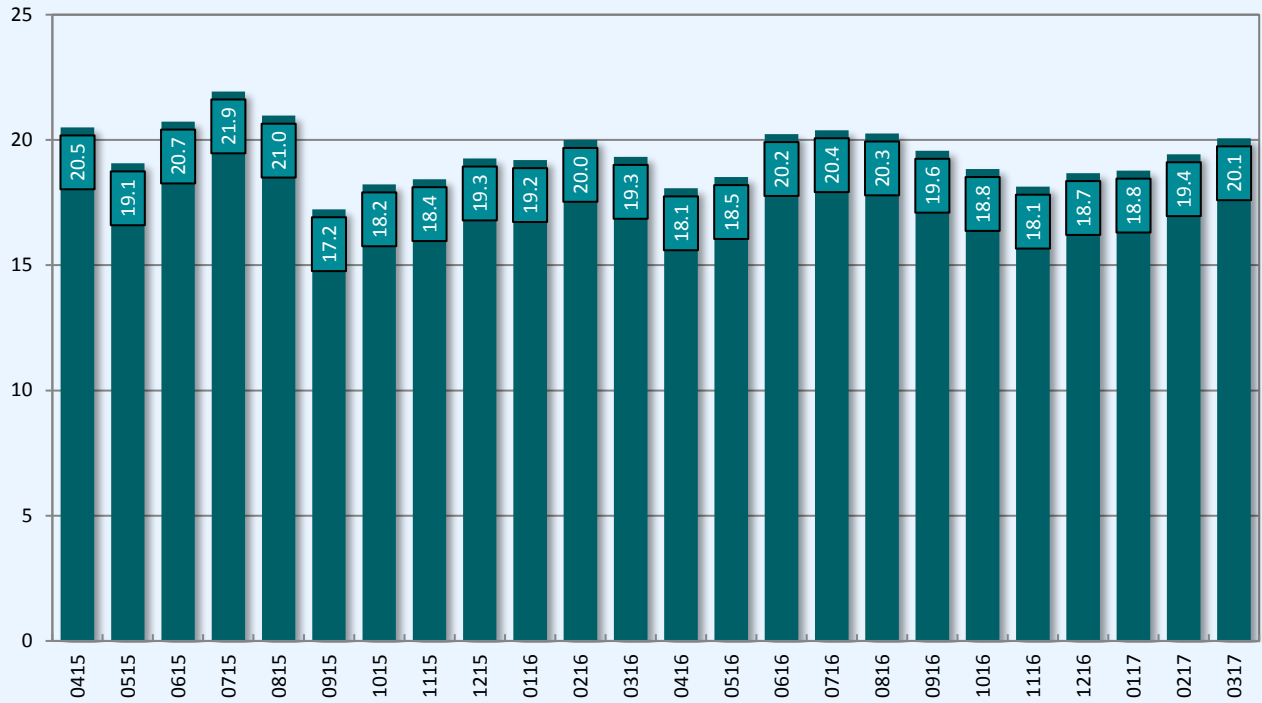
14	Total Departures by Top Equipment Used at Fargo
14	Total Seats by Top Equipment Used at Fargo
15	Share of Total Departures by Top Equipment Used at Fargo
15	Share of Total Seats by Top Equipment Used at Fargo
16	Average Daily Nonstop Departures by Equipment at Fargo
16	Average Daily Nonstop Seats by Equipment at Fargo

Glossary of Terms

17	Glossary of Terms
----	-------------------

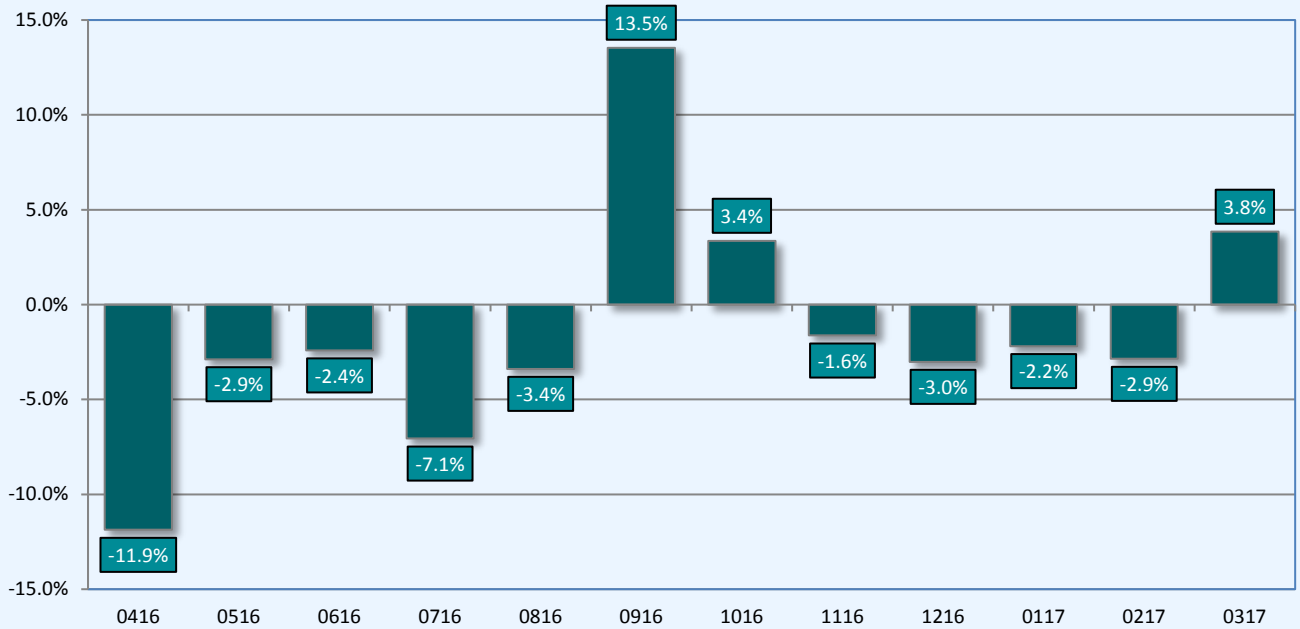
Average Departures Per Day at Fargo

April 2015 thru March 2017 (Scheduled Flights Only)



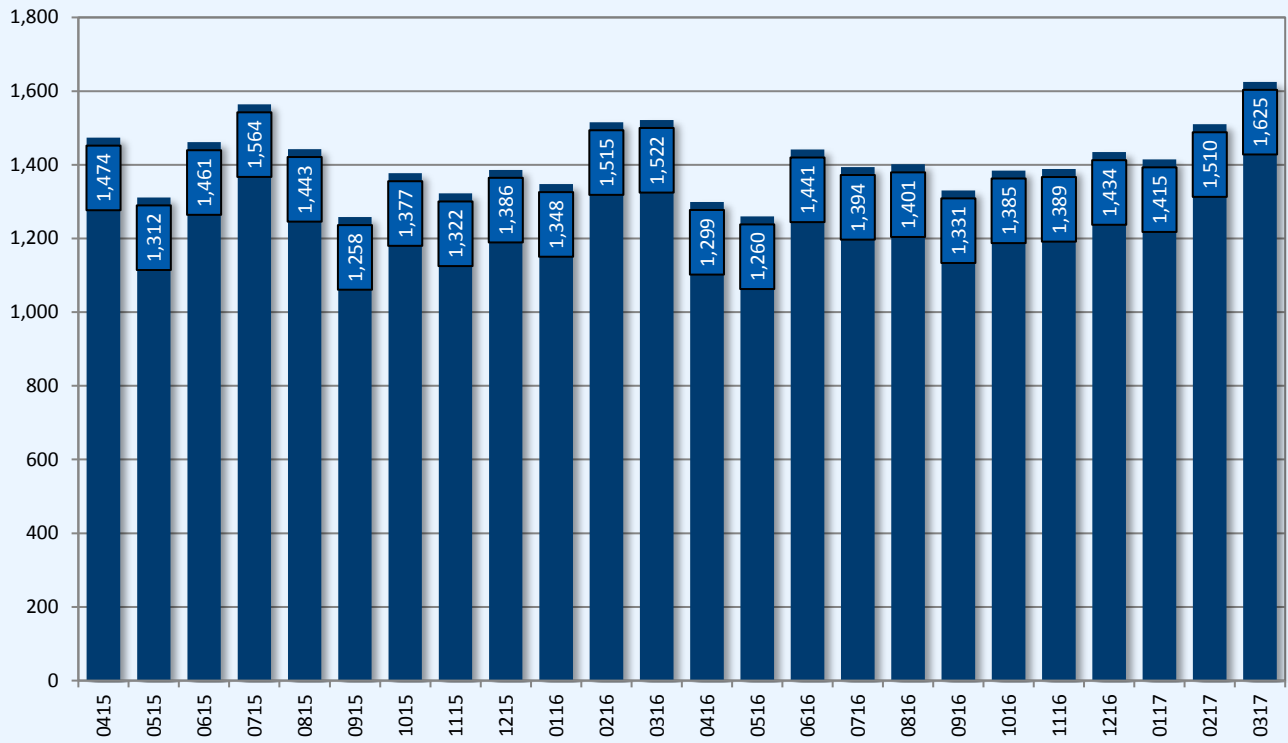
Percent Year Over Year Change in Average Departures at Fargo

April 2016 thru March 2017 (Scheduled Flights Only)



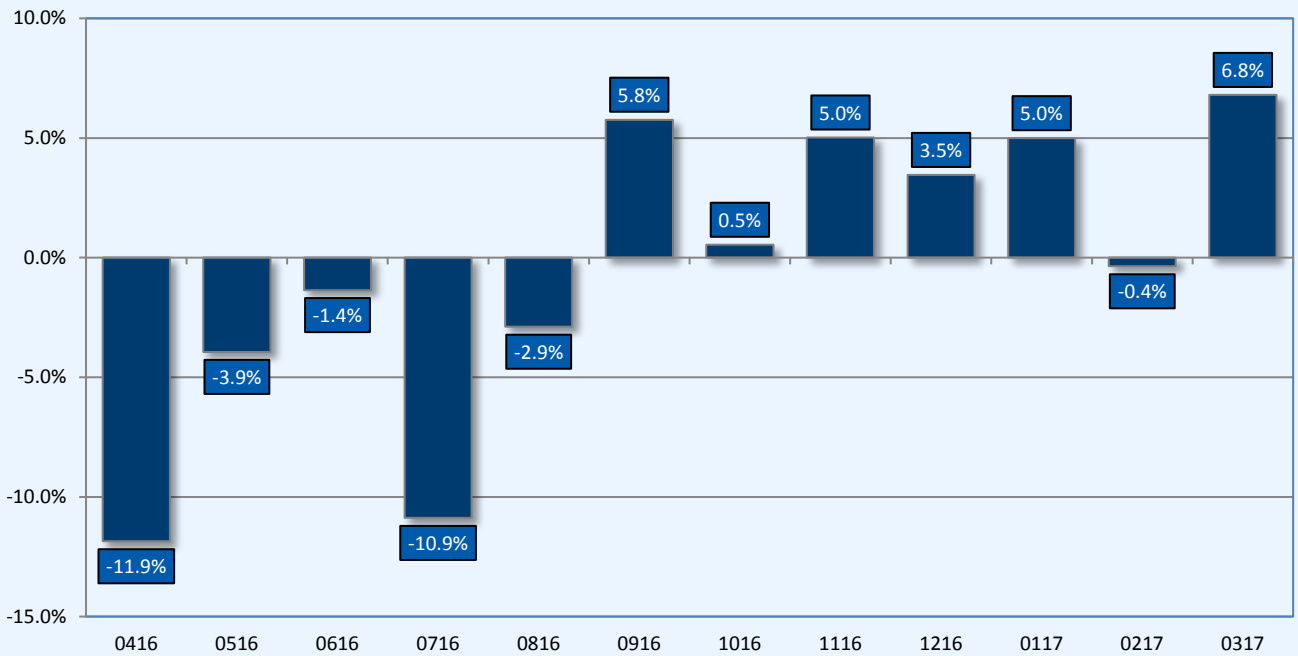
Average Seats Per Day at Fargo

April 2015 thru March 2017 (Scheduled Flights Only)



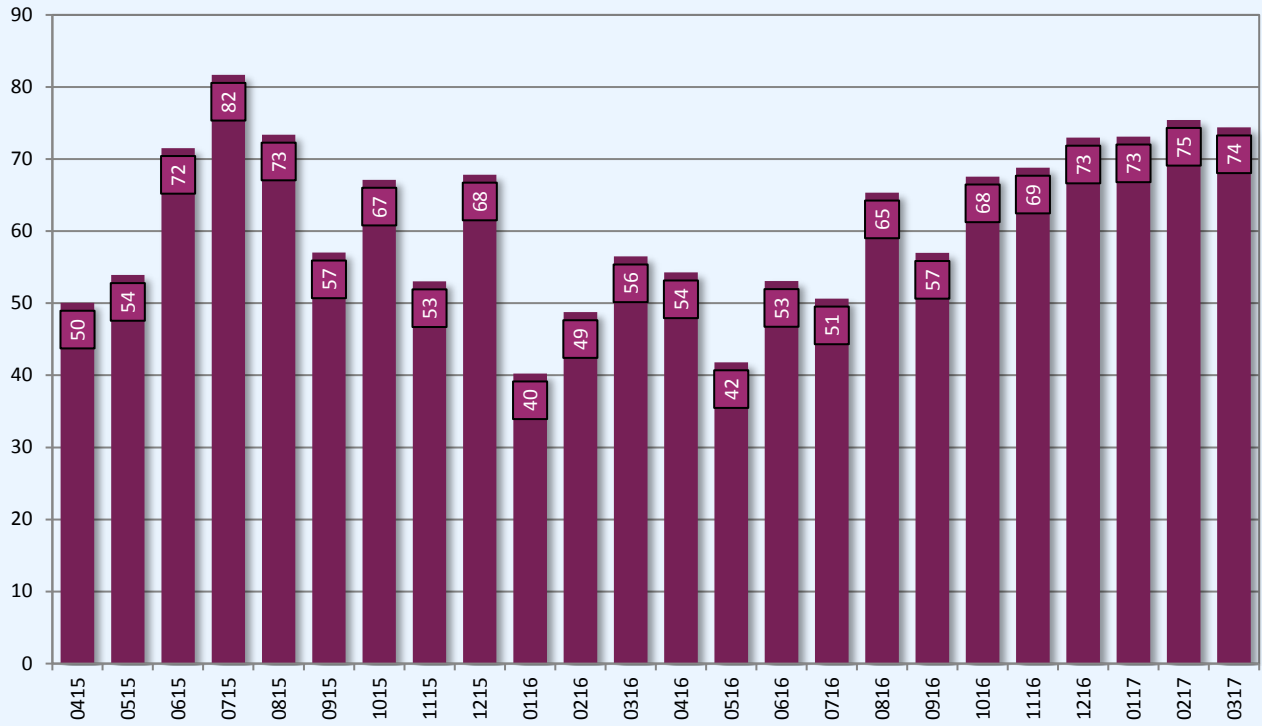
Percent Year Over Year Change in Average Seats at Fargo

April 2016 thru March 2017 (Scheduled Flights Only)



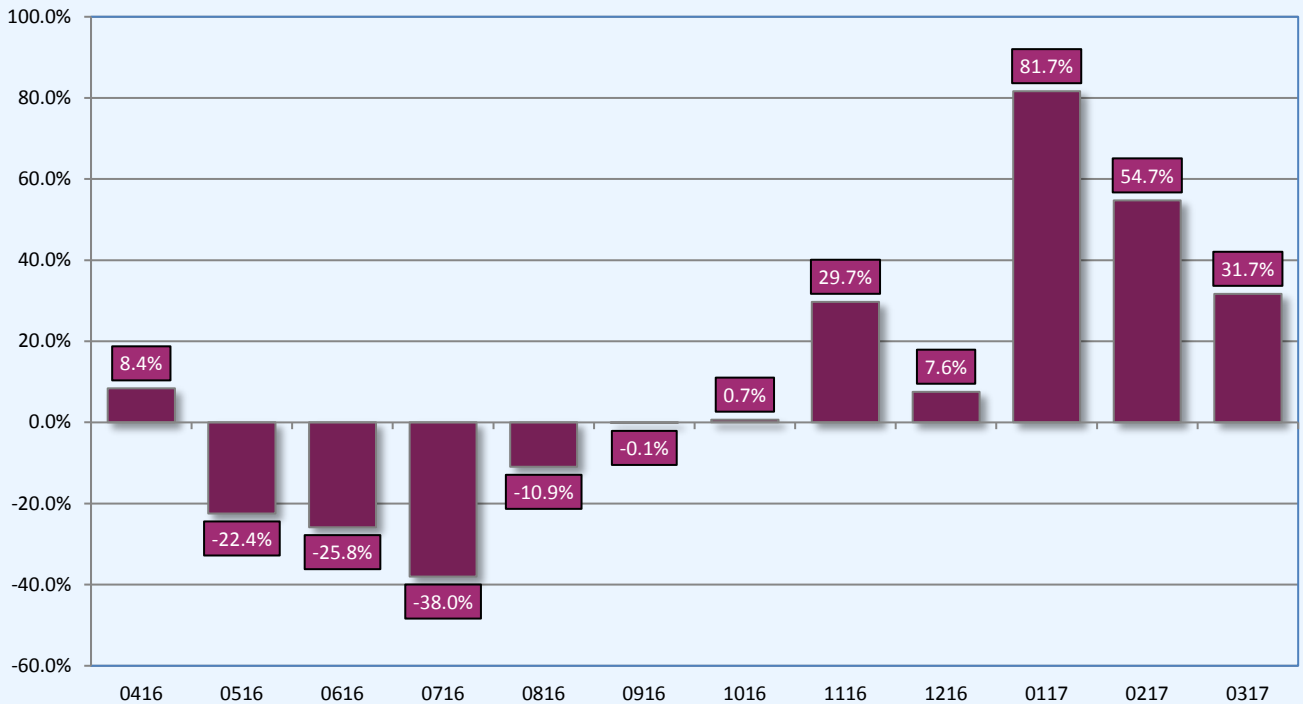
Average First Class Seats Per Day at Fargo

April 2015 thru March 2017 (Scheduled Flights Only)



Percent Year Over Year Change in Average First Class Seats at Fargo

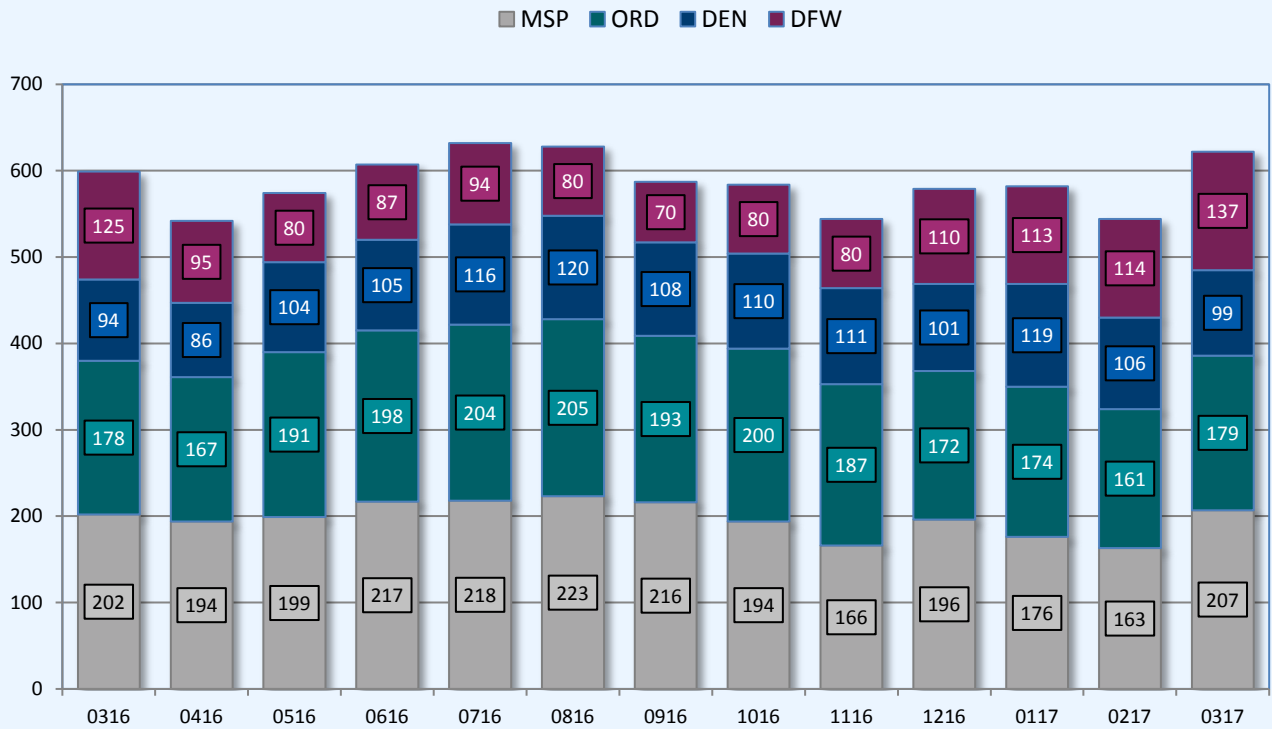
April 2016 thru March 2017 (Scheduled Flights Only)



Fargo, ND

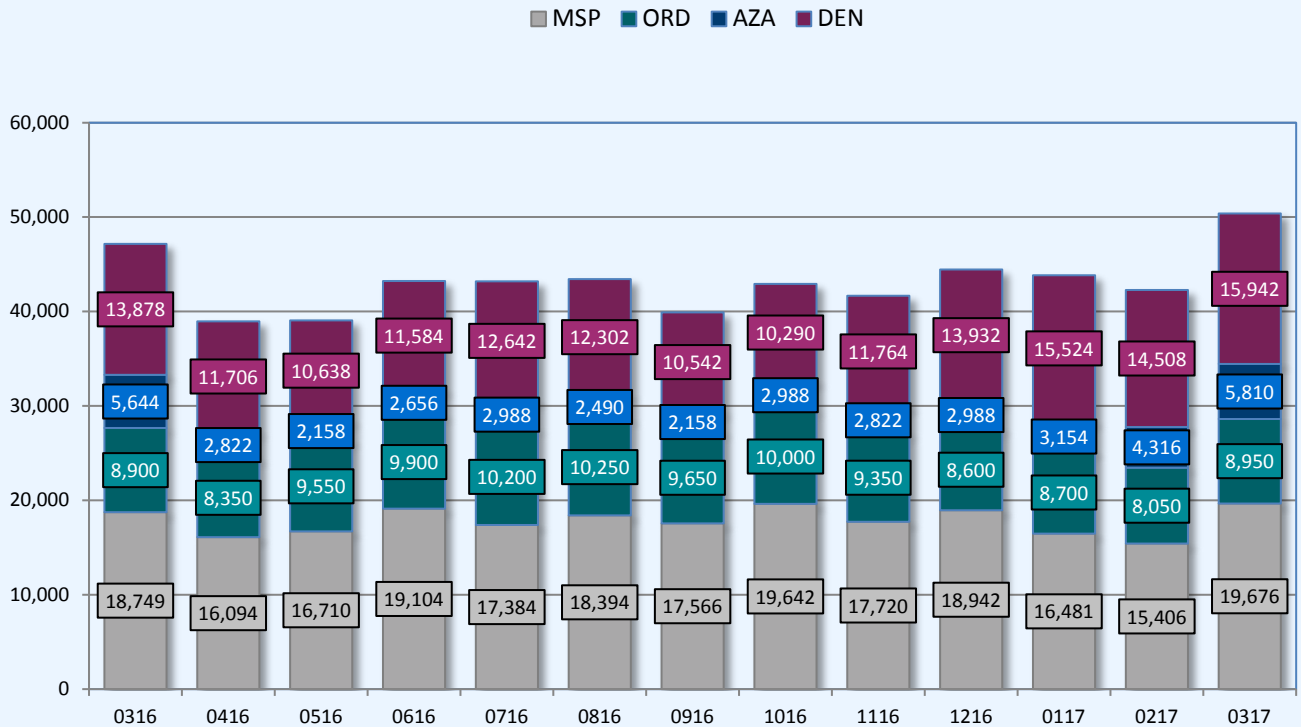
Total Departures by Top Destinations at Fargo

March 2016 thru March 2017 (Scheduled Flights Only)



Total Nonstop Seats by Top Destinations at Fargo

March 2016 thru March 2017 (Scheduled Flights Only)

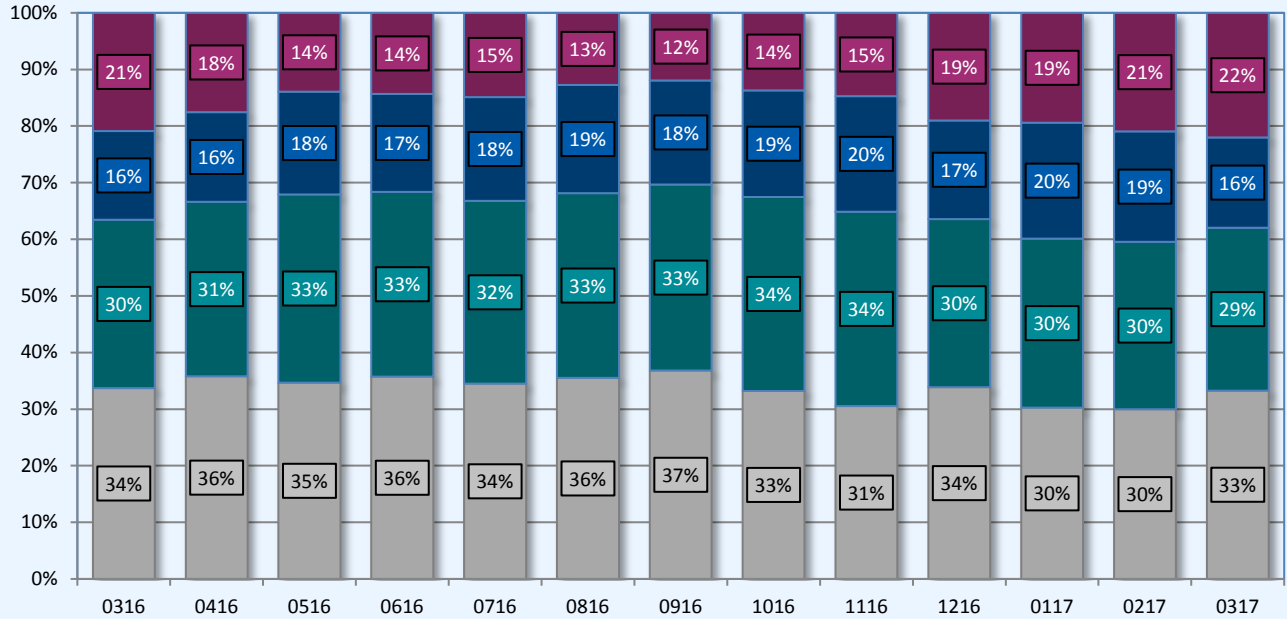


Fargo, ND

Share of Total Departures by Top Destinations at Fargo

March 2016 thru March 2017 (Scheduled Flights Only)

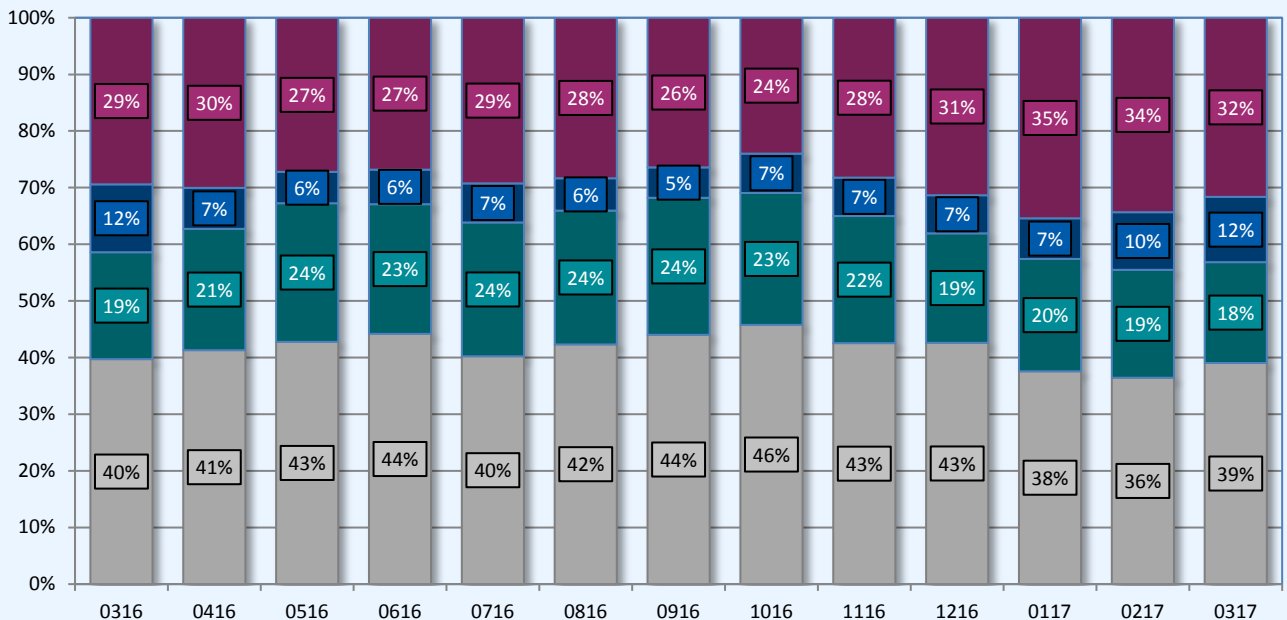
■ MSP ■ ORD ■ DEN ■ DFW



Share of Total Seats by Top Destinations at Fargo

March 2016 thru March 2017 (Scheduled Flights Only)

■ MSP ■ ORD ■ AZA ■ DEN



Fargo, ND

Average Daily Nonstop Departures by Destination at Fargo

Ranked by March 2017

Rank	Airport	2016 Mar	2016 Apr	2016 May	2016 Jun	2016 Jul	2016 Aug	2016 Sep	2016 Oct	2016 Nov	2016 Dec	2017 Jan	2017 Feb	2017 Mar
1	MSP	6.5	6.5	6.4	7.2	7.0	7.2	7.2	6.3	5.5	6.3	5.7	5.8	6.7
2	ORD	5.7	5.6	6.2	6.6	6.6	6.6	6.4	6.5	6.2	5.5	5.6	5.8	5.8
3	DEN	3.0	2.9	3.4	3.5	3.7	3.9	3.6	3.5	3.7	3.3	3.8	3.8	3.2
4	DFW	1.5	1.6	1.6	1.6	1.6	1.5	1.6	1.6	1.5	1.8	2.0	2.0	2.0
5	AZA	1.1	0.6	0.4	0.5	0.6	0.5	0.4	0.6	0.6	0.6	0.6	0.9	1.1
6	LAS	0.7	0.5	0.3	0.3	0.3	0.3	0.3	0.3	0.3	0.5	0.6	0.6	0.6
7	SFB	0.3	0.3	0.3	0.3	0.3	0.2		0.1	0.3	0.2	0.3	0.3	0.3
8	PIE	0.3	0.2										0.1	0.3
9	ATL	0.1	0.0								0.5	0.2	0.1	0.1
10														
11														
12														
13														
14														
15														
Total of All		19.3	18.1	18.5	20.2	20.4	20.3	19.6	18.8	18.1	18.7	18.8	19.4	20.1

Average Daily Nonstop Seats by Destination at Fargo

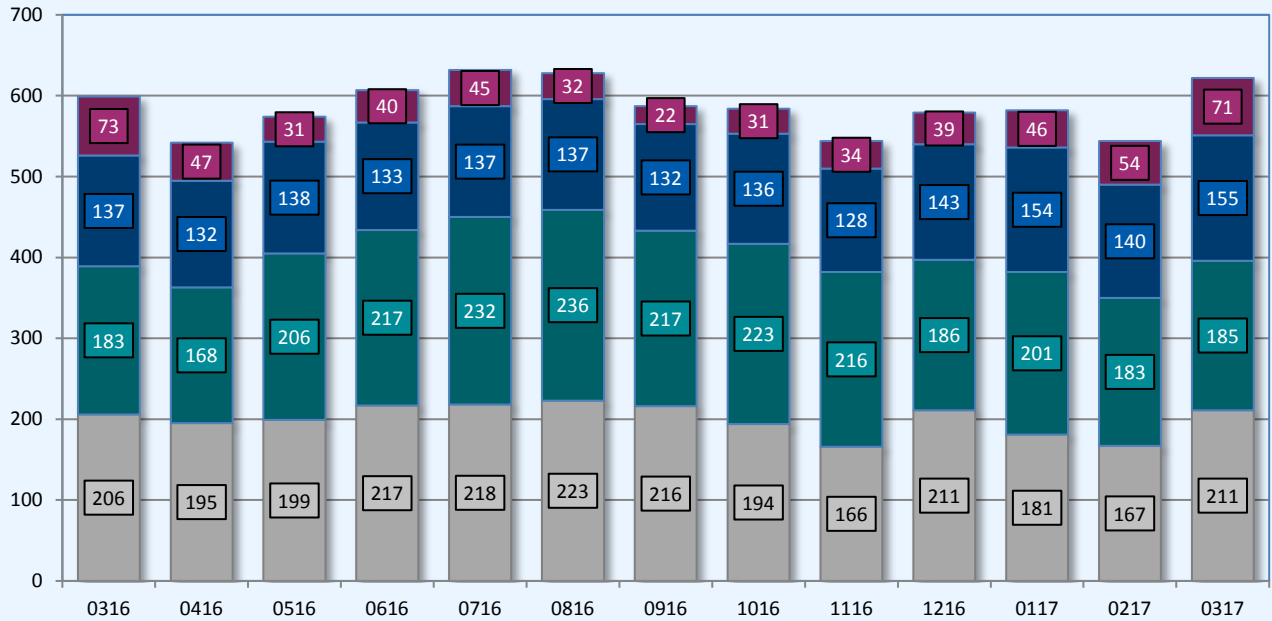
Ranked by March 2017

Rank	Airport	2016 Mar	2016 Apr	2016 May	2016 Jun	2016 Jul	2016 Aug	2016 Sep	2016 Oct	2016 Nov	2016 Dec	2017 Jan	2017 Feb	2017 Mar
1	MSP	605	536	539	637	561	593	586	634	591	611	532	550	635
2	ORD	287	278	308	330	329	331	322	323	312	277	281	288	289
3	AZA	182	94	70	89	96	80	72	96	94	96	102	154	187
4	DEN	152	143	168	175	187	194	180	177	185	163	192	189	160
5	DFW	77	78	79	78	76	112	122	85	113	137	152	152	152
6	LAS	118	77	48	50	48	43	50	48	50	80	96	95	96
7	SFB	43	50	48	44	48	27		21	44	32	48	47	48
8	PIE	48	39										24	48
9	ATL	10	3								37	12	11	10
10														
11														
12														
13														
14														
15														
Total of All		1,522	1,299	1,260	1,441	1,394	1,401	1,331	1,385	1,389	1,434	1,415	1,510	1,625

Total Departures by Top Airlines at Fargo

March 2016 thru March 2017 (Scheduled Flights Only)

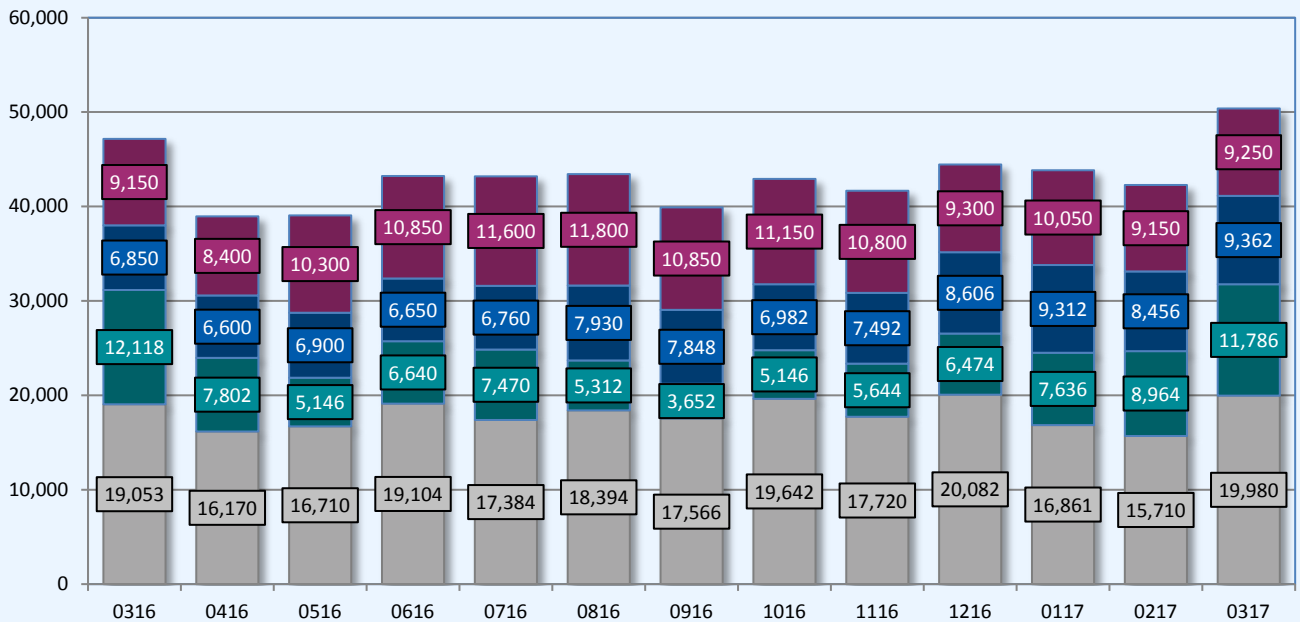
DL UA AA G4



Total Seats by Top Airlines at Fargo

March 2016 thru March 2017 (Scheduled Flights Only)

DL G4 AA UA

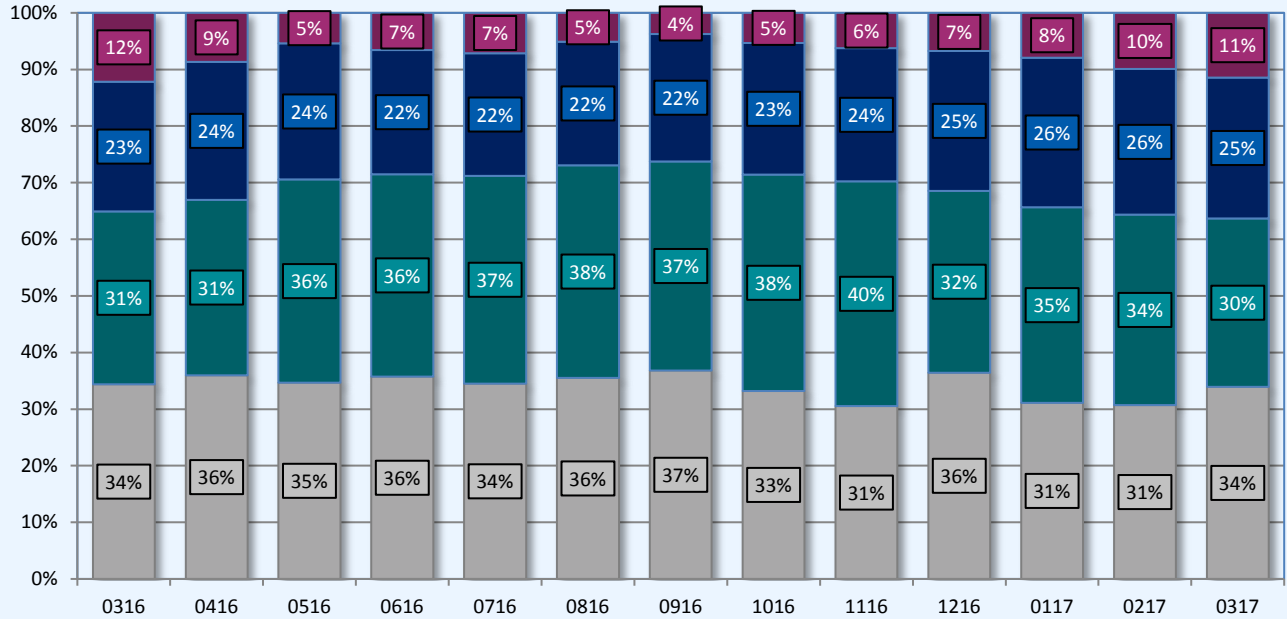


Fargo, ND

Share of Total Departures by Top Airlines at Fargo

March 2016 thru March 2017 (Scheduled Flights Only)

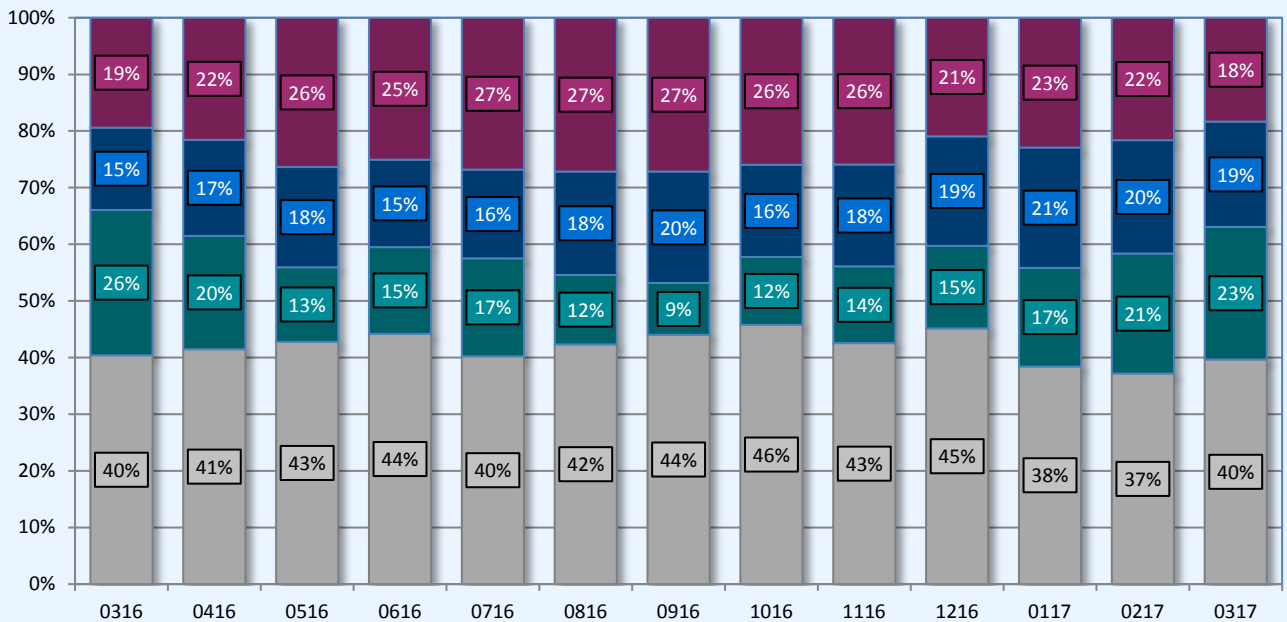
DL UA AA G4



Share of Total Seats by Top Airlines at Fargo

March 2016 thru March 2017 (Scheduled Flights Only)

DL G4 AA UA



Fargo, ND

Average Daily Nonstop Departures by Airline at Fargo

Ranked by March 2017

Rank	Airline	2016 Mar	2016 Apr	2016 May	2016 Jun	2016 Jul	2016 Aug	2016 Sep	2016 Oct	2016 Nov	2016 Dec	2017 Jan	2017 Feb	2017 Mar
1	DL	6.6	6.5	6.4	7.2	7.0	7.2	7.2	6.3	5.5	6.8	5.8	6.0	6.8
2	UA	5.9	5.6	6.6	7.2	7.5	7.6	7.2	7.2	7.2	6.0	6.5	6.5	6.0
3	AA	4.4	4.4	4.5	4.4	4.4	4.4	4.4	4.4	4.3	4.6	5.0	5.0	5.0
4	G4	2.4	1.6	1.0	1.3	1.5	1.0	0.7	1.0	1.1	1.3	1.5	1.9	2.3
5														
6														
7														
8														
9														
10														
11														
12														
13														
14														
15														
Total of All		19.3	18.1	18.5	20.2	20.4	20.3	19.6	18.8	18.1	18.7	18.8	19.4	20.1

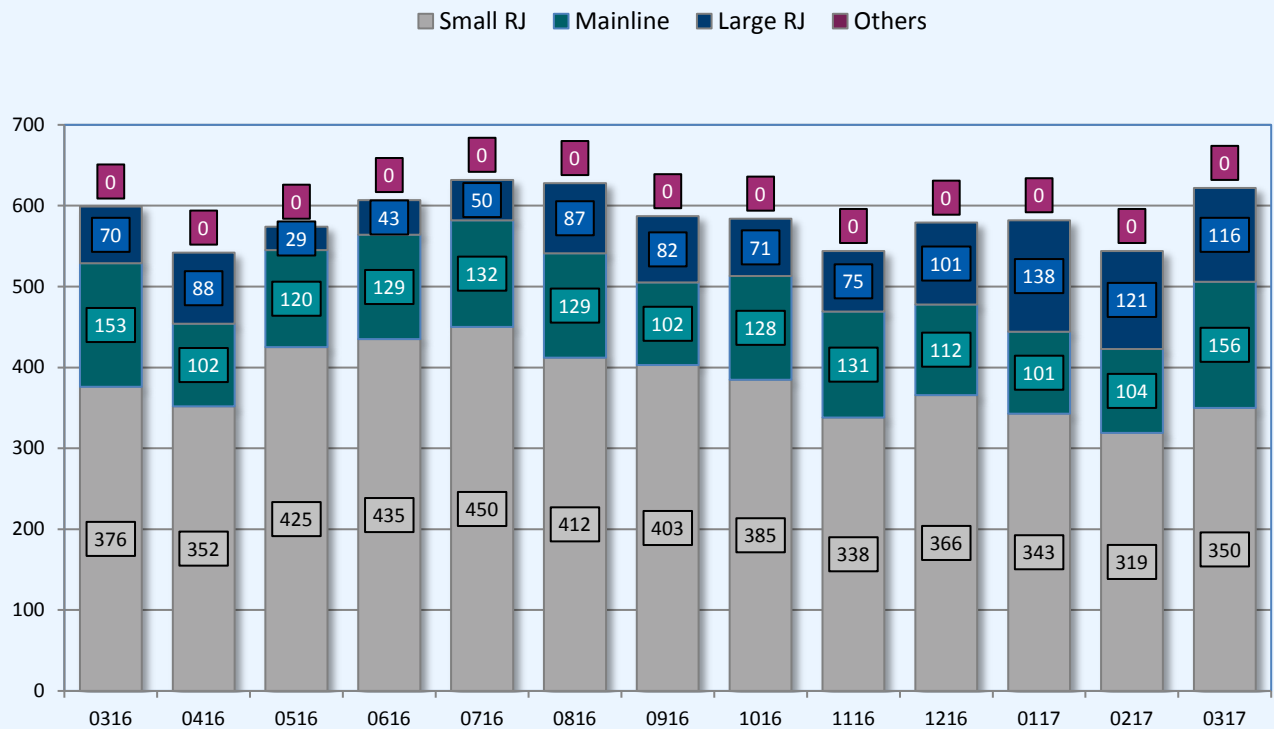
Average Daily Nonstop Seats by Airline at Fargo

Ranked by March 2017

Rank	Airline	2016 Mar	2016 Apr	2016 May	2016 Jun	2016 Jul	2016 Aug	2016 Sep	2016 Oct	2016 Nov	2016 Dec	2017 Jan	2017 Feb	2017 Mar
1	DL	615	539	539	637	561	593	586	634	591	648	544	561	645
2	G4	391	260	166	221	241	171	122	166	188	209	246	320	380
3	AA	221	220	223	222	218	256	262	225	250	278	300	302	302
4	UA	295	280	332	362	374	381	362	360	360	300	324	327	298
5														
6														
7														
8														
9														
10														
11														
12														
13														
14														
15														
Total of All		1,522	1,299	1,260	1,441	1,394	1,401	1,331	1,385	1,389	1,434	1,415	1,510	1,625

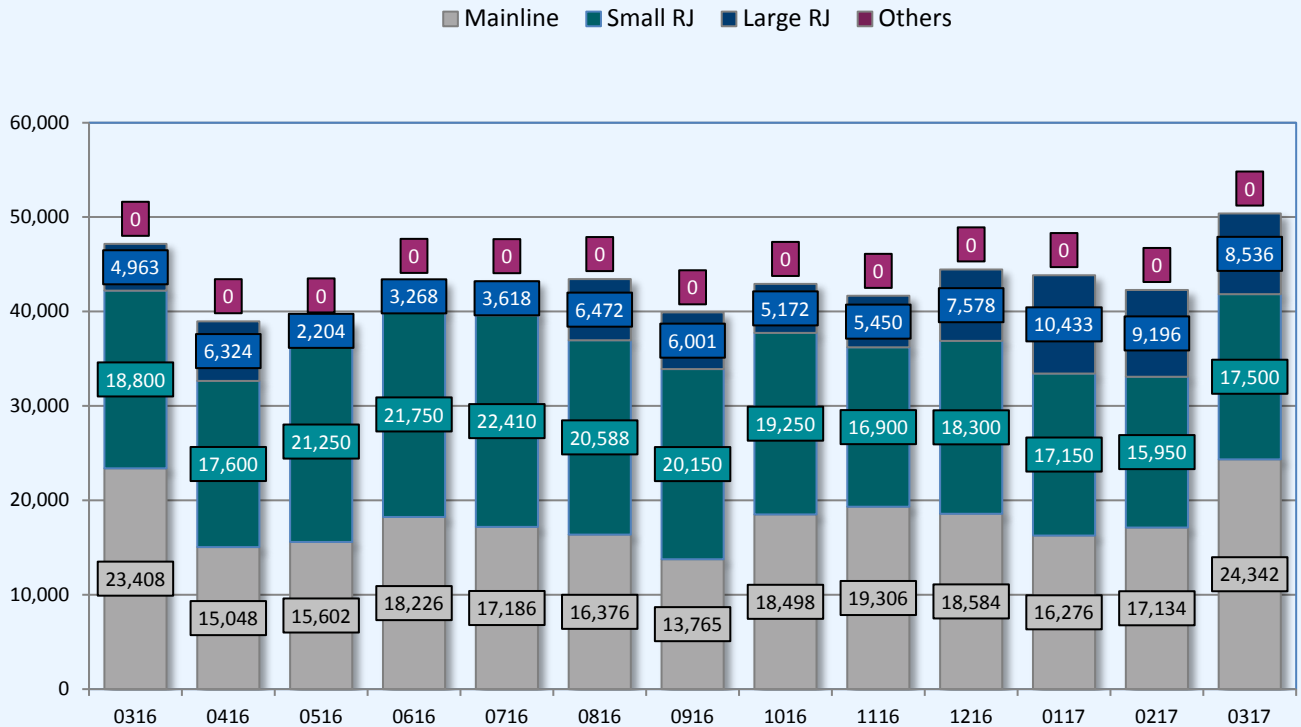
Total Departures by Top Equipment Type Used at Fargo

March 2016 thru March 2017 (Scheduled Flights Only)



Total Seats by Top Equipment Type Used at Fargo

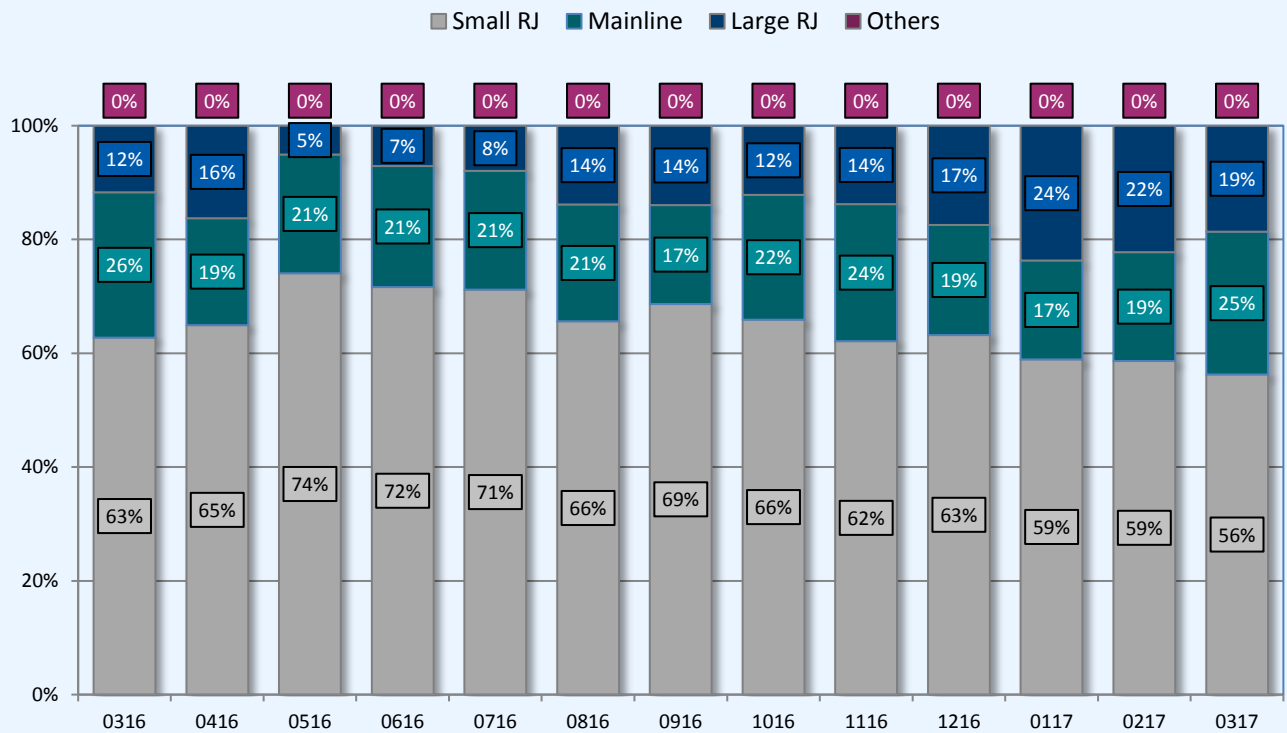
March 2016 thru March 2017 (Scheduled Flights Only)



Fargo, ND

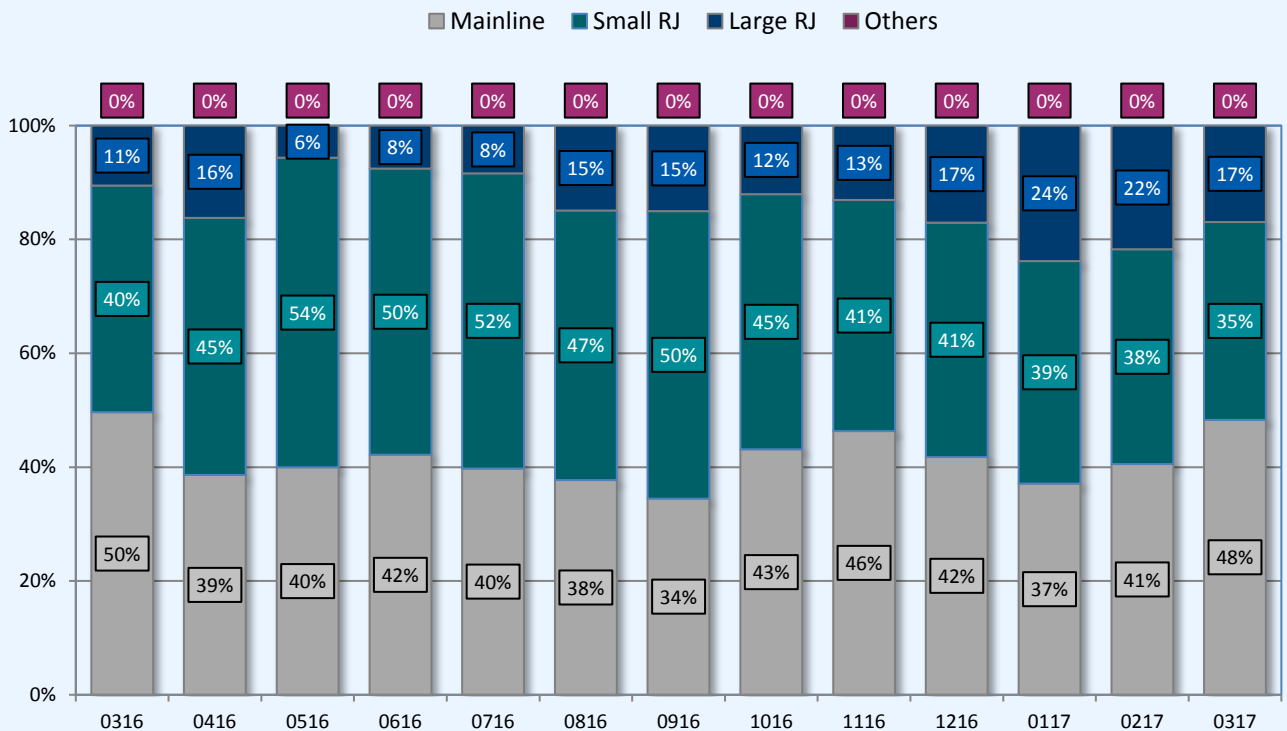
Share of Total Departures by Equipment Type Used at Fargo

March 2016 thru March 2017 (Scheduled Flights Only)



Share of Total Seats by Equipment Type Used at Fargo

March 2016 thru March 2017 (Scheduled Flights Only)



Fargo, ND

Average Daily Nonstop Departures by Equipment Type at Fargo

Ranked by March 2017

Rank	Type	2016 Mar	2016 Apr	2016 May	2016 Jun	2016 Jul	2016 Aug	2016 Sep	2016 Oct	2016 Nov	2016 Dec	2017 Jan	2017 Feb	2017 Mar
1	Small RJ	12.1	11.7	13.7	14.5	14.5	13.3	13.4	12.4	11.3	11.8	11.1	11.4	11.3
2	Mainline	4.9	3.4	3.9	4.3	4.3	4.2	3.4	4.1	4.4	3.6	3.3	3.7	5.0
3	Large RJ	2.3	2.9	0.9	1.4	1.6	2.8	2.7	2.3	2.5	3.3	4.5	4.3	3.7
4														
5														
6														
7														
8														
9														
10														
11														
12														
13														
14														
15														
Total of All		19.3	18.1	18.5	20.2	20.4	20.3	19.6	18.8	18.1	18.7	18.8	19.4	20.1

Average Daily Nonstop Seats by Equipment Type at Fargo

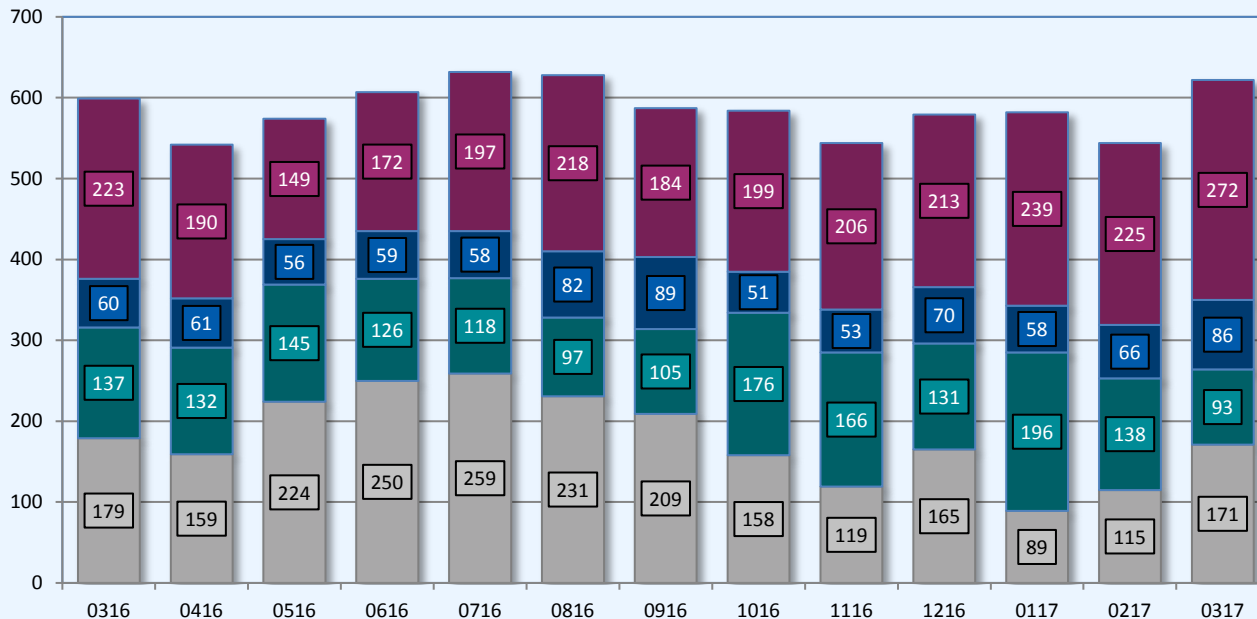
Ranked by March 2017

Rank	Type	2016 Mar	2016 Apr	2016 May	2016 Jun	2016 Jul	2016 Aug	2016 Sep	2016 Oct	2016 Nov	2016 Dec	2017 Jan	2017 Feb	2017 Mar
1	Mainline	755	502	503	608	554	528	459	597	644	599	525	612	785
2	Small RJ	606	587	685	725	723	664	672	621	563	590	553	570	565
3	Large RJ	160	211	71	109	117	209	200	167	182	244	337	328	275
4														
5														
6														
7														
8														
9														
10														
11														
12														
13														
14														
15														
Total of All		1,522	1,299	1,260	1,441	1,394	1,401	1,331	1,385	1,389	1,434	1,415	1,510	1,625

Total Departures by Top Equipment Used at Fargo

March 2016 thru March 2017 (Scheduled Flights Only)

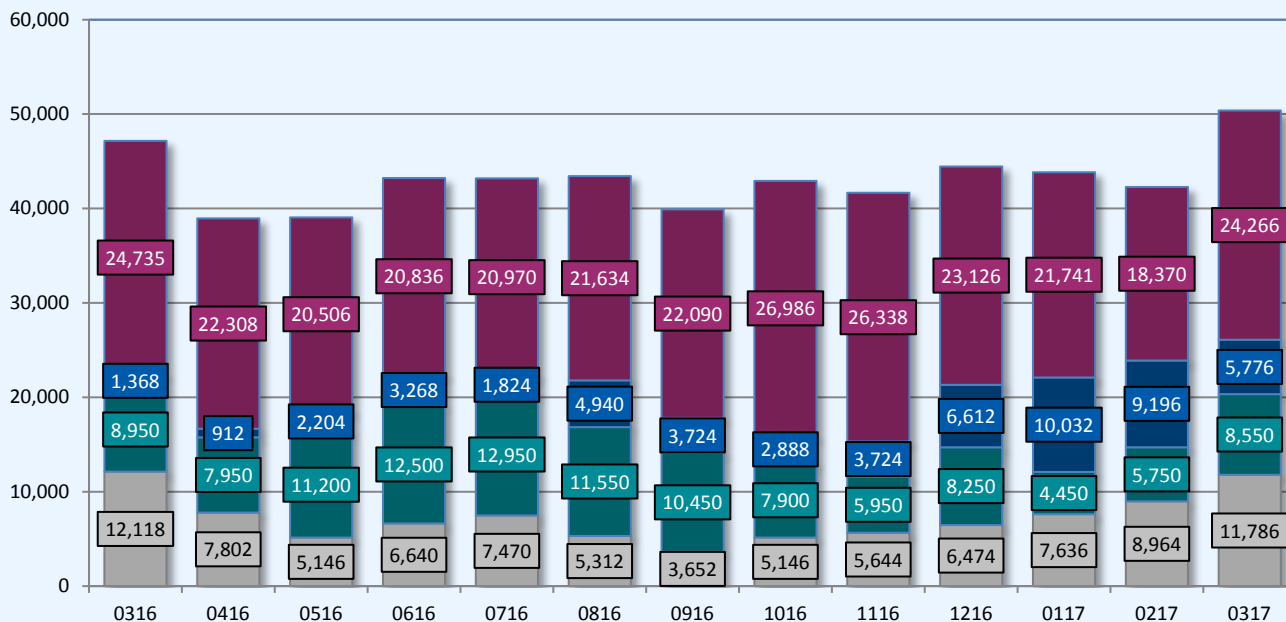
■ CRJ ■ ER4 ■ ERJ ■ CR9



Total Seats by Top Equipment Used at Fargo

March 2016 thru March 2017 (Scheduled Flights Only)

■ M80 ■ CRJ ■ CR9 ■ 319

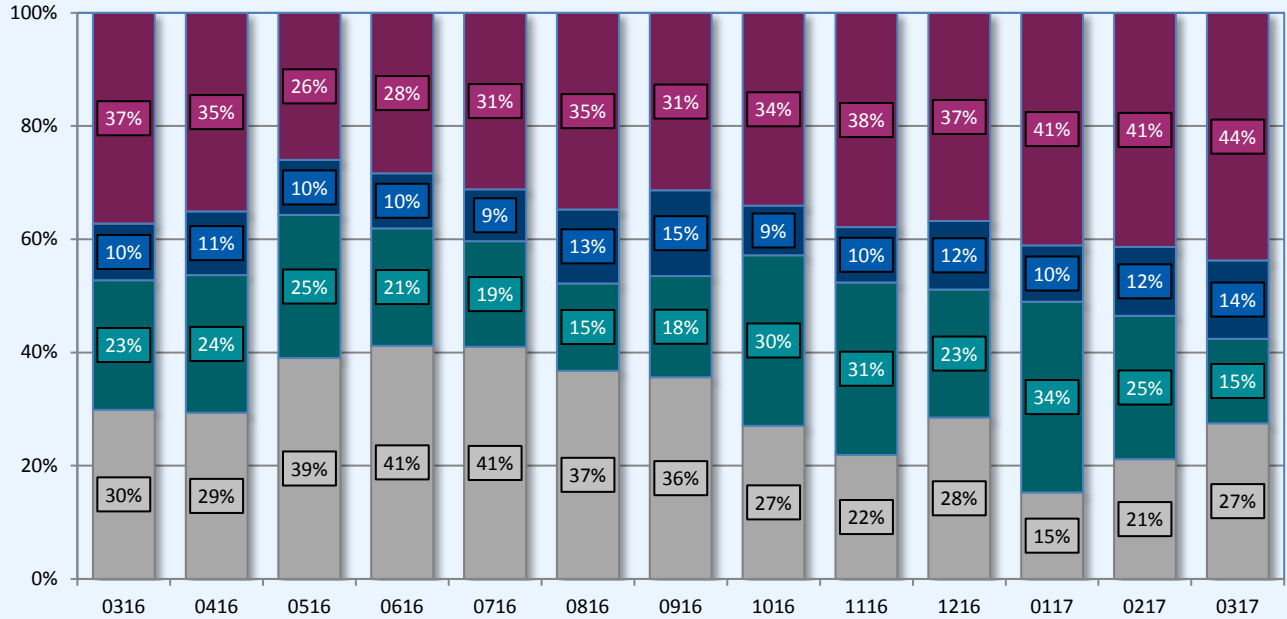


Fargo, ND

Share of Total Departures by Top Equipment Used at Fargo

March 2016 thru March 2017 (Scheduled Flights Only)

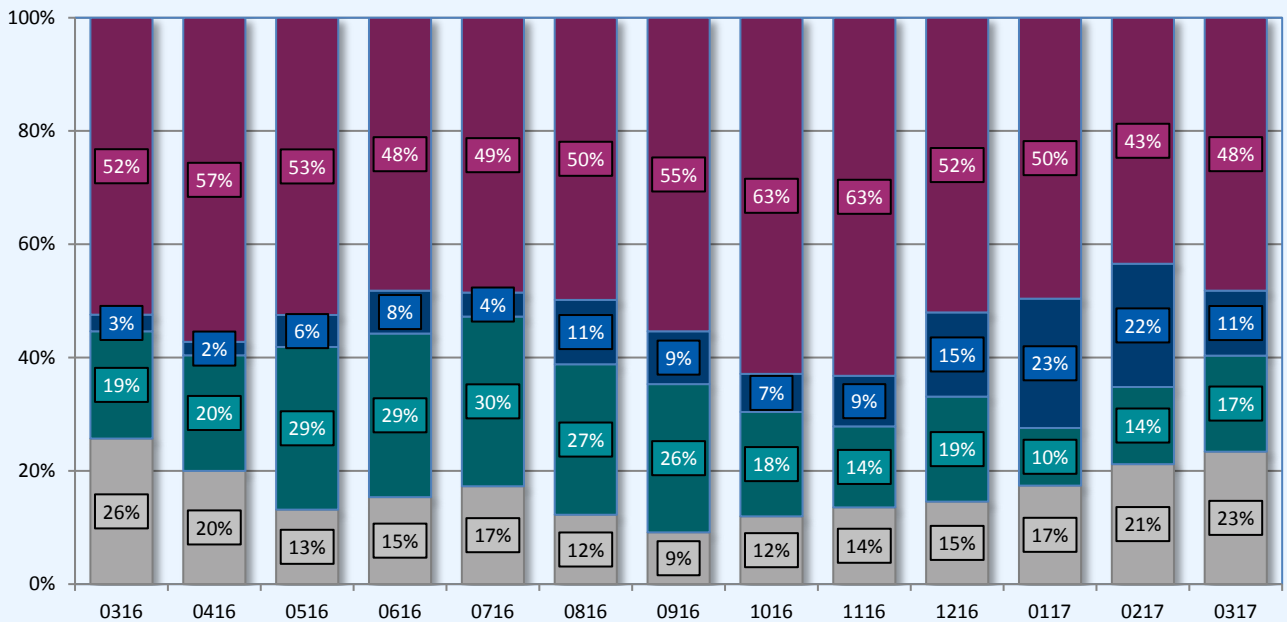
■ CRJ ■ ER4 ■ ERJ ■ CR9



Share of Total Seats by Top Equipment Used at Fargo

March 2016 thru March 2017 (Scheduled Flights Only)

■ M80 ■ CRJ ■ CR9 ■ 319



Fargo, ND

Average Daily Nonstop Departures by Equipment at Fargo

Ranked by March 2017

Rank	Aircraft	2016 Mar	2016 Apr	2016 May	2016 Jun	2016 Jul	2016 Aug	2016 Sep	2016 Oct	2016 Nov	2016 Dec	2017 Jan	2017 Feb	2017 Mar
1	CRJ	5.8	5.3	7.2	8.3	8.4	7.5	7.0	5.1	4.0	5.3	2.9	4.1	5.5
2	ER4	4.4	4.4	4.7	4.2	3.8	3.1	3.5	5.7	5.5	4.2	6.3	4.9	3.0
3	ERJ	1.9	2.0	1.8	2.0	1.9	2.6	3.0	1.6	1.8	2.3	1.9	2.4	2.8
4	CR9	0.6	0.4	0.9	1.4	0.8	2.1	1.6	1.2	1.6	2.8	4.3	4.3	2.5
5	M80	2.4	1.6	1.0	1.3	1.5	1.0	0.7	1.0	1.1	1.3	1.5	1.9	2.3
6	319	1.8	0.6	0.7	1.7	0.2	0.3	0.2	0.1	0.6	0.5			1.4
7	E70	1.6	1.7			0.8	0.6	1.1	1.0	0.3	0.5			1.3
8	M90	0.6	0.0						1.0	0.1				0.6
9	320	0.1	0.5	0.2	0.7	0.0	0.2	1.0	0.8	1.6	0.4	1.5	1.4	0.5
10	739	0.1								0.0	1.5	0.0	0.4	0.3
11														
12														
13														
14														
15														
Total of All		19.3	18.1	18.5	20.2	20.4	20.3	19.6	18.8	18.1	18.7	18.8	19.4	20.1

Average Daily Nonstop Seats by Equipment at Fargo

Ranked by March 2017

Rank	Aircraft	2016 Mar	2016 Apr	2016 May	2016 Jun	2016 Jul	2016 Aug	2016 Sep	2016 Oct	2016 Nov	2016 Dec	2017 Jan	2017 Feb	2017 Mar
1	M80	391	260	166	221	241	171	122	166	188	209	246	320	380
2	CRJ	289	265	361	417	418	373	348	255	198	266	144	205	276
3	CR9	44	30	71	109	59	159	124	93	124	213	324	328	186
4	319	234	81	94	220	24	41	22	8	76	59			183
5	ER4	221	220	234	210	190	156	175	284	277	211	316	246	150
6	ERJ	97	102	90	98	94	132	148	82	88	113	94	118	139
7	M90	103	5						155	21				103
8	E70	114	120			58	45	76	71	21	31			89
9	320	15	85	34	104	5	25	145	122	260	59	242	216	72
10	739	12								6	273	6	64	46
11														
12														
13														
14														
15														
Total of All		1,522	1,299	1,260	1,441	1,394	1,401	1,331	1,385	1,389	1,434	1,415	1,510	1,625

Glossary of Terms

Airport Codes

MSP	Minneapolis/St. Paul, MN
ORD	Chicago, IL
DEN	Denver, CO
DFW	Dallas/Ft.Worth, TX
AZA	Mesa, AZ
LAS	Las Vegas, NV
SFB	Sanford, FL
PIE	St. Petersburg, FL
ATL	Atlanta, GA

Equipment Types

Small RJ	Less than 51 seats
Mainline	Larger than 100 seats
Large RJ	Between 51 and 100 seats

Airline Codes

DL	Delta Air Lines
UA	United Airlines
AA	American Airlines
G4	Allegiant Air LLC

Equipment

CRJ	Canadair Regional Jet
ER4	Embraer RJ145
ERJ	Embraer RJ 135 /140 /145
CR9	Canadair Regional Jet 900
M80	Boeing (Douglas) MD-80
319	Airbus A319
E70	Embraer 170
M90	Boeing (Douglas) MD-90
320	Airbus A320
739	Boeing 737-900 Passenger